

# PS-5002U3A

2-Port HDMI 2.0a/Audio KVM Switch with USB 3.0 HUB

User Manual

## TABLE OF CONTENTS

INTRODUCTION .....	1
FEATURES .....	1
PACKAGE CONTENTS.....	1
SPECIFICATIONS.....	2
PANEL DESCRIPTIONS .....	3
CONNECTION DIAGRAM .....	4
HOTKEY .....	5
NOTICE .....	6
WARRANTY .....	8



rev: 240708  
Made in Taiwan

## INTRODUCTION

The **PS-5002U3A 2-Port HDMI 2.0a/Audio KVM Switch with Built-in USB 3.0 HUB** provides the most flexible and cost effective solution in the market for multiple computer management at home & office. The KVM switch can control 2 HDMI USB computers by one set of console peripherals (keyboard, mouse & monitor). With built-in USB 3.0 hub, users can share USB peripheral devices between connected computers. Besides, this KVM switch also supports HDR and the true 4K2K video.

## FEATURES

- HDMI 2.0a compliant
- Supports 4K2K@60 4:4:4 8bits
- Supports HDR<sup>1</sup>, which is 4K2K@60 4:2:0 10bits<sup>2</sup>
- HDCP 2.2 and 1.4 compliant
- Supports separate line input and output
- Plug and Play without any driver needed
- Supports built-in 4-port USB 3.0 HUB to share USB devices
- Supports independent HID keyboard & mouse ports
- Supports hotkeys
- Wide frequency range: 25MHz~600MHz
- Video bandwidth: 18Gbps
- Supports xvYCC, x.v.Color & Deep Color
- Supports Dolby Digital(+), DTS-HD and Dolby TrueHD audio
- Supports default HDMI EDID and learns the EDID from displays
- Firmware upgradable for support of new features and technology enhancements
- The KVM can switch every input by push buttons
- Easy installation with rack-mounting and wall-mounting designs for master and receiver respectively



1. HDR = High Dynamic Range
2. The video bandwidth of 4K2K@60 4:2:0 10bits (HDR) is 384MHz, and the 4K2K@60 4:4:4 8bits is 594MHz

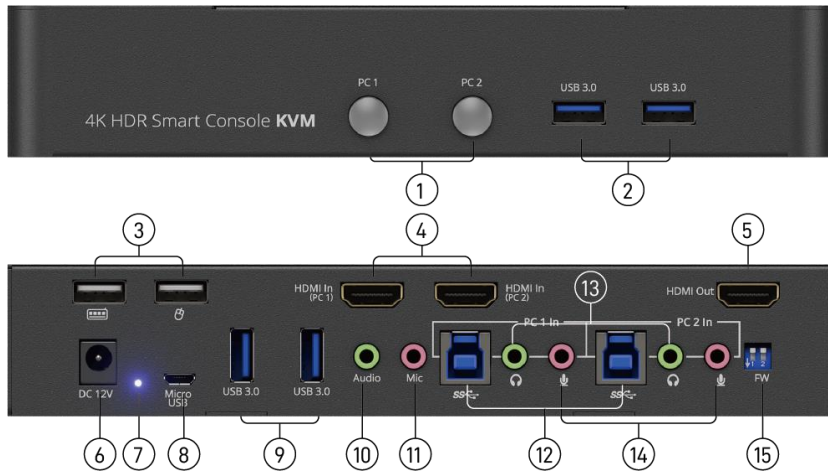
## PACKAGE CONTENTS

- 1x PS-5002U3A
- 1x DC 12V 2A power supply
- 1x Rack-mounting ear set
- 1x User Manual

## SPECIFICATIONS

Model Name		PS-5002U3A
<b>Technical</b>		
Role of usage	2-Port HDMI KVM Switch	
HDMI compliance	3D & 4K2K@60Hz	
HDCP compliance	Up to HDCP 2.2	
Video bandwidth	Single-link 594MHz [18 Gbps]	
Video support	Up to HDR 4K2K@60 (4:2:0 10bits) / 4K2K@60 (4:4:4 8bits)	
Audio support	Surround sound (up to 7.1ch) or stereo digital audio	
ESD protection	Human body model — ±15kV [air-gap discharge] & ±8kV [contact discharge]	
Input	2x HDMI/ 2x USB 3.0(type B)/ 3x 3.5mm phone jack	
Output	1x HDMI / 4x USB 3.0(type A)/ 2x USB 1.1(type A)/ 3x 3.5mm phone jack	
HDMI connector	Type A [19-pin female]	
USB connector	USB3.0 type A / type B	
<b>Mechanical</b>		
Housing	Metal enclosure	
Dimensions [L x W x H]	Model	202 x 112 x 37mm [7.9" x 4.4" x 1.4"]
	Package	331 x 162 x 204mm [1' x 6.4" x 8"]
	Carton	500 x 432 x 340mm [1'6" x 1'4" x 1'1"]
Weight	Model	720g [1.6 lbs]
	Package	1864g [4.1 lbs]
Power supply	12V 2A DC	
Power consumption	6 Watts [max]	
Operation temperature	0~40°C [32~104°F]	
Storage temperature	-20~60°C [-4~140°F]	
Relative humidity	20~90% RH [no condensation]	

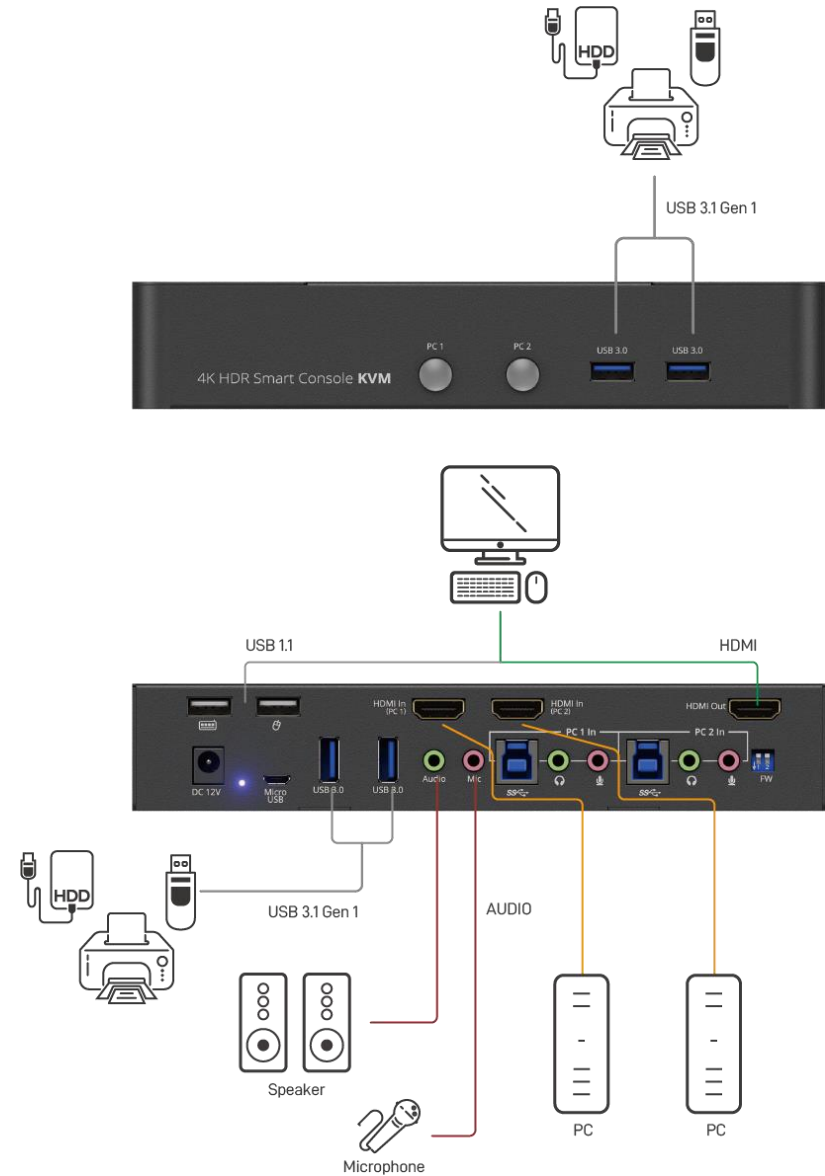
## PANEL DESCRIPTIONS



1. **Port 1-2 Selection Push Button:** Switch between computers
2. **USB 3.0 Hub:** Connect to USB devices
3. **Console USB Ports:** Connect to keyboard & mouse
4. **KVM Video IN 1-2 (HDMI IN 1-2):** Connect the H
5. **DMI cable to PC**
6. **Console Video OUT (HDMI OUT):** Connect the HDMI cable to a display
7. **+12V DC:** +12V DC power jack
8. **Power Status:** Power indicator LED
9. **Micro USB:** For F/W update
10. **USB 3.0 Hub:** Connect to USB devices
11. **Console Stereo Audio OUT:** Connect to analog stereo audio speaker
12. **Console Stereo Audio IN:** Connect to analog stereo audio source
13. **KVM USB 3.0 (Type B):** Connect the USB cable to PC
14. **KVM Stereo Audio IN 1-2:** Connect the stereo cable to PC
15. **KVM Stereo Audio OUT 1-2:** Connect the stereo cable to PC
16. **2-Pin Dip Switch:** For F/W update

DIP Switch Position		Description
2-Pin		
PIN#1	ON [↓]	KVM Firmware Update mode
	OFF [↑]	Working mode
PIN#2	ON [↓]	MCU Firmware Update mode
	OFF [↑]	Working mode

## CONNECTION DIAGRAM



## HOTKEY

Default setting, all of the following commands begin by pressing the [Scroll Lock] key twice. Please follow the hotkey command listed below for selected operating functions:

Hot key Definition	
[Scroll Lock] + [Scroll Lock] + [Ctrl] + [Enter]	Change [Scroll Lock] [Scroll Lock] to [Ctrl] [Ctrl] <sup>1</sup>
[Ctrl] + [Ctrl] + [Scroll Lock] + [Enter]	Change [Ctrl] [Ctrl] to [Scroll Lock] [Scroll Lock]
[Scroll Lock] + [Scroll Lock] + [NUMBER1-2] + [Enter]	Switch input 1-2 source to output
[Scroll Lock] + [Scroll Lock] + [S]	Auto Scan/ Exit Auto Scan mode <sup>2</sup>
[Scroll Lock] + [Scroll Lock] + [I] + [N] + [Enter]	Auto Scan Set [N]: 5-599 <sup>3</sup>
[Scroll Lock] + [Scroll Lock] + [+]	Auto Scan Interval Add 5 Seconds
[Scroll Lock] + [Scroll Lock] + [-]	Auto Scan Interval Subtract 5 Seconds

### Notes:

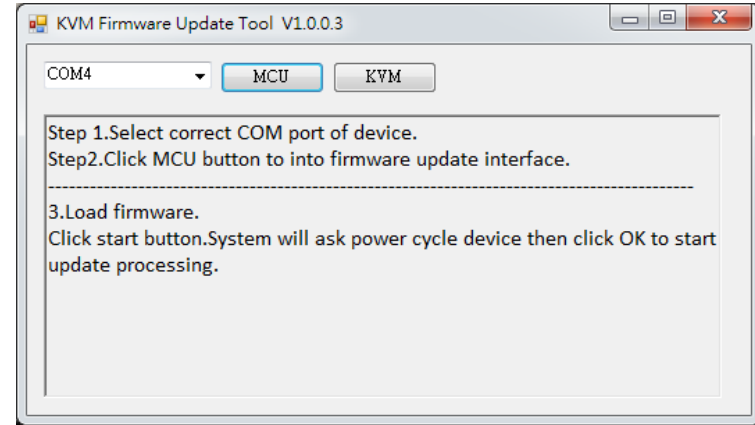
1. You can change the default setting to [Ctrl] [Ctrl], if you are using a Mac keyboard or a keyboard that does not have Scroll Lock key
2. Auto scan through each channel for quick screen browsing (default = 15 seconds)
3. You can set the auto scan interval according to the steps. (N = Number, 5-599)

## NOTICE

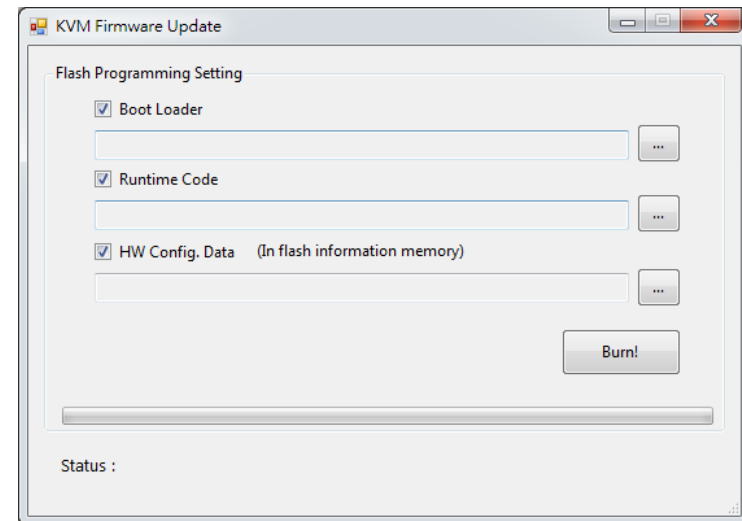
Firmware update is proceeded through Micro-USB

### 1. KVM F/W update

- a) Connect the Micro-USB to USB cable between PC and device
- b) Set dip switch PIN#1 to ON[↓] and then power on device
- c) Open firmware update software and then select COM Port



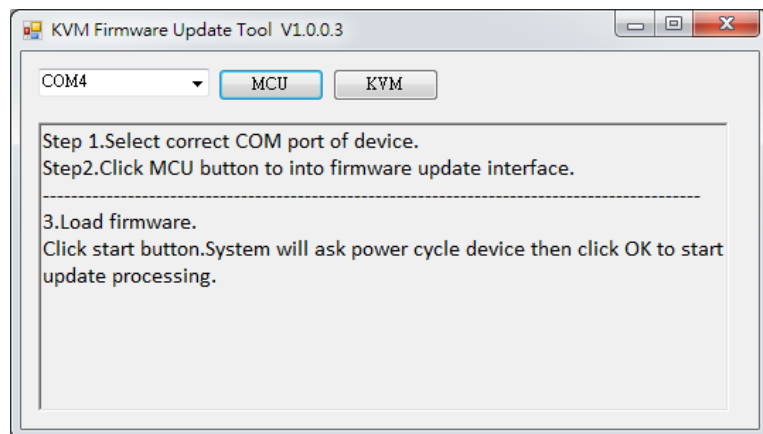
- d) Click  button to open "KVM Firmware Update" windows. Check all items and click each  button to select the file which you want to write into device. Click the  button to start firmware update



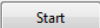


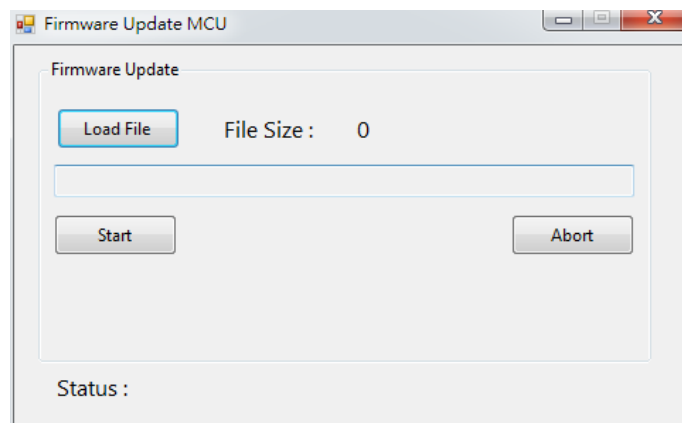
- e) After updating, please set the dip switch PIN#1 to OFF [↑] and power cycle the device

## 2. MCU F/W update

- a) Connect the Micro-USB to USB cable between PC and device
- b) Set dip switch PIN#2 to ON[↓] and then power on device
- c) Open firmware update software and then select COM Port



- d) Click  button to open "Firmware Update MCU" windows.
- Click  button to select the file which you want to write into device.
- Click  button to start firmware update



- e) After updating, please set the dip switch PIN#2 to OFF [↑] and power cycle the device

## WARRANTY

The SELLER warrants the **PS-5002U3A 2-Port HDMI 2.0a/Audio KVM Switch with USB 3.0 HUB** free from defects in the material and workmanship for 1 year from the date of purchase from the SELLER or an authorized dealer. Should this product fail to be in good working order within 1 year warranty period, The SELLER, at its option, repair or replace the unit, provided that the unit has not been subjected to accident, disaster, abuse or any unauthorized modifications including static discharge and power surge. This warranty is offered by the SELLER for its BUYER with direct transaction only. This warranty is void if the warranty seal on the metal housing is broken.

Unit that fails under conditions other than those covered will be repaired at the current price of parts and labor in effect at the time of repair. Such repairs are warranted for 90 days from the day of reshipment to the BUYER. If the unit is delivered by mail, customers agree to insure the unit or assume the risk of loss or damage in transit. Under no circumstances will a unit be accepted without a return authorization number.

The warranty is in lieu of all other warranties expressed or implied, including without limitations, any other implied warranty or fitness or merchantability for any particular purpose, all of which are expressly disclaimed.

Proof of sale may be required in order to claim warranty. Customers outside Taiwan are responsible for shipping charges to and from the SELLER. Cables and power adapters are limited to a 30 day warranty and must be free from any markings, scratches, and neatly coiled.

The content of this manual has been carefully checked and is believed to be accurate. However, The SELLER assumes no responsibility for any inaccuracies that may be contained in this manual. The SELLER will NOT be liable for direct, indirect, incidental, special, or consequential damages resulting from any defect or omission in this manual, even if advised of the possibility of such damages. **Also, the technical information contained herein regarding the PS-5002U3A features and specifications is subject to change without further notice.**